

SOUTHPARK MALL

MOLINE, IL

MARKET PROFILE
2017



PROPERTY TYPE:

Regional

TOTAL SQUARE FEET:

862,000

MAJOR RETAILERS:

Dick's Sporting Goods, Dillard's,
JCPenney, Von Maur, Youngers

RESTAURANTS & ENTERTAINMENT:

Arby's, Buffalo Wild Wings,
Habanero's, KFC,
Olive Garden, Taco Bell

BUILT / RENOVATED:

1974 / 2014

FOR INFORMATION:

309-797-8450

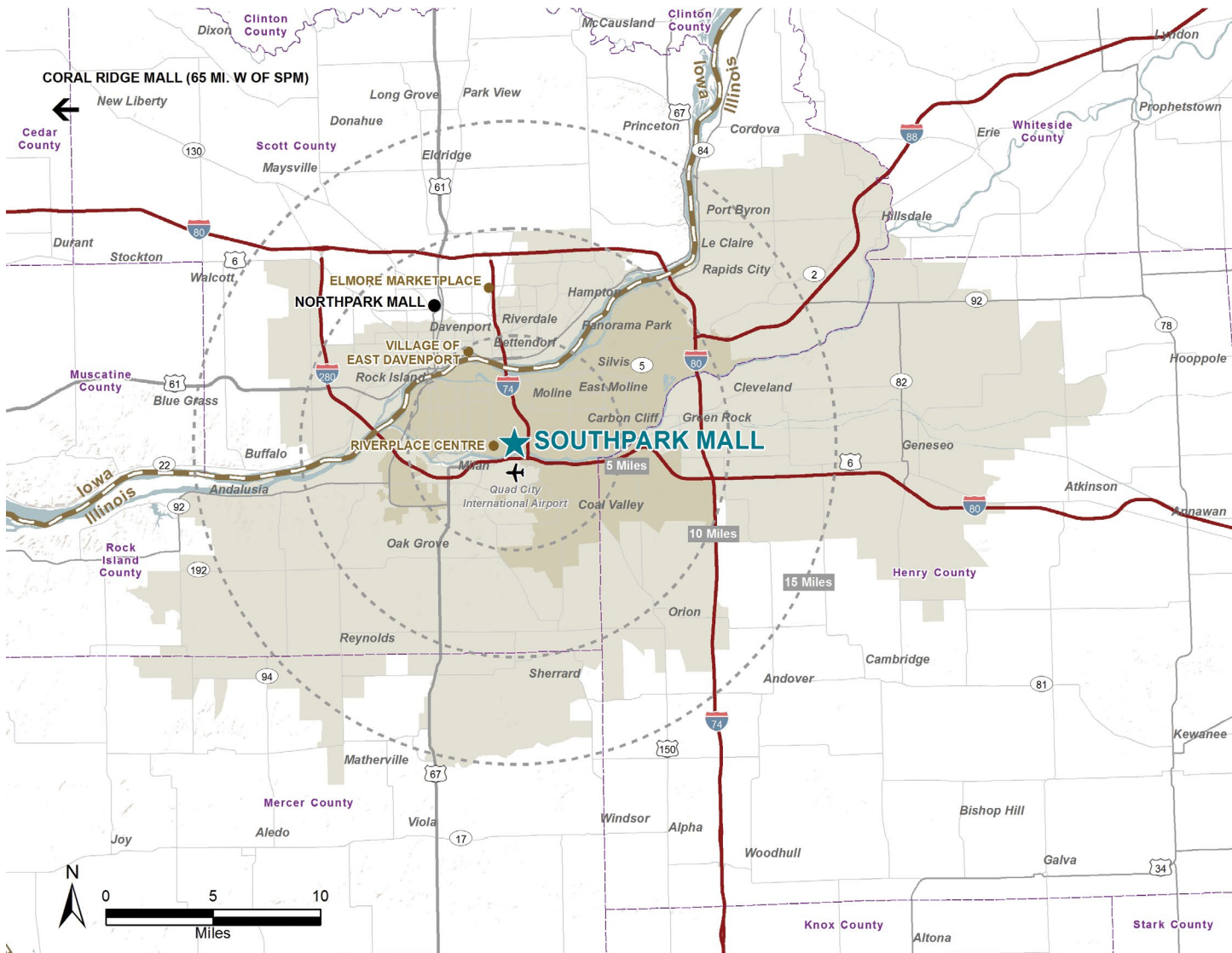
Macerich.com








DEMOGRAPHIC SUMMARY

POPULATION	PRIMARY TRADE AREA		TOTAL TRADE AREA		DAVENPORT-MOLINE-ROCK ISLAND, IA-IL [MSA]	
2016 Total Population	125,172		270,993		388,688	
2021 Total Population	124,957		274,526		395,514	
2016-2021 Population Growth	-0.2%		1.3%		1.8%	
HOUSEHOLDS						
2016 Total Households	52,189		111,022		158,961	
2021 Total Households	52,226		112,557		161,823	
2016-2021 Household Growth	0.1%		1.4%		1.8%	
INCOME						
Average Household Income	\$61,066		\$67,851		\$68,916	
Median Household Income	\$44,511		\$50,126		\$51,000	
Per Capita Income	\$26,244		\$28,330		\$28,618	
HOUSEHOLD INCOME RANGES						
\$50,000 +	23,668	45.4%	55,678	50.2%	81,305	51.1%
\$75,000 +	13,603	26.1%	34,366	31.0%	51,093	32.1%
\$100,000 +	7,531	14.4%	20,705	18.6%	30,823	19.4%
\$150,000 +	3,076	5.9%	8,478	7.6%	12,325	7.8%
AGE						
Median Age	39.9		40.1		40.2	
EDUCATION/OCCUPATION LEVELS						
Bachelor's Degree Plus	19,767	22.9%	50,269	27.0%	72,260	27.0%
White Collar	31,703	54.3%	73,460	57.0%	106,518	57.5%
RACE/ETHNICITY						
White	95,504	76.3%	222,976	82.3%	328,253	84.5%
Black	13,868	11.1%	22,106	8.2%	28,101	7.2%
American Indian	361	0.3%	822	0.3%	1,089	0.3%
Asian	3,468	2.8%	6,260	2.3%	7,851	2.0%
Pacific Islander	65	0.1%	141	0.1%	174	0.0%
Other Race	11,906	9.5%	18,688	6.9%	23,220	6.0%
Hispanic or Latino	18,449	14.7%	27,677	10.2%	33,590	8.6%
Not Hispanic or Latino	106,722	85.3%	243,316	89.8%	355,098	91.4%
DAYTIME EMPLOYMENT						
Total Businesses	5,192		10,911		16,648	
Total Employees	74,390		164,678		232,853	

TRADE AREA MAP



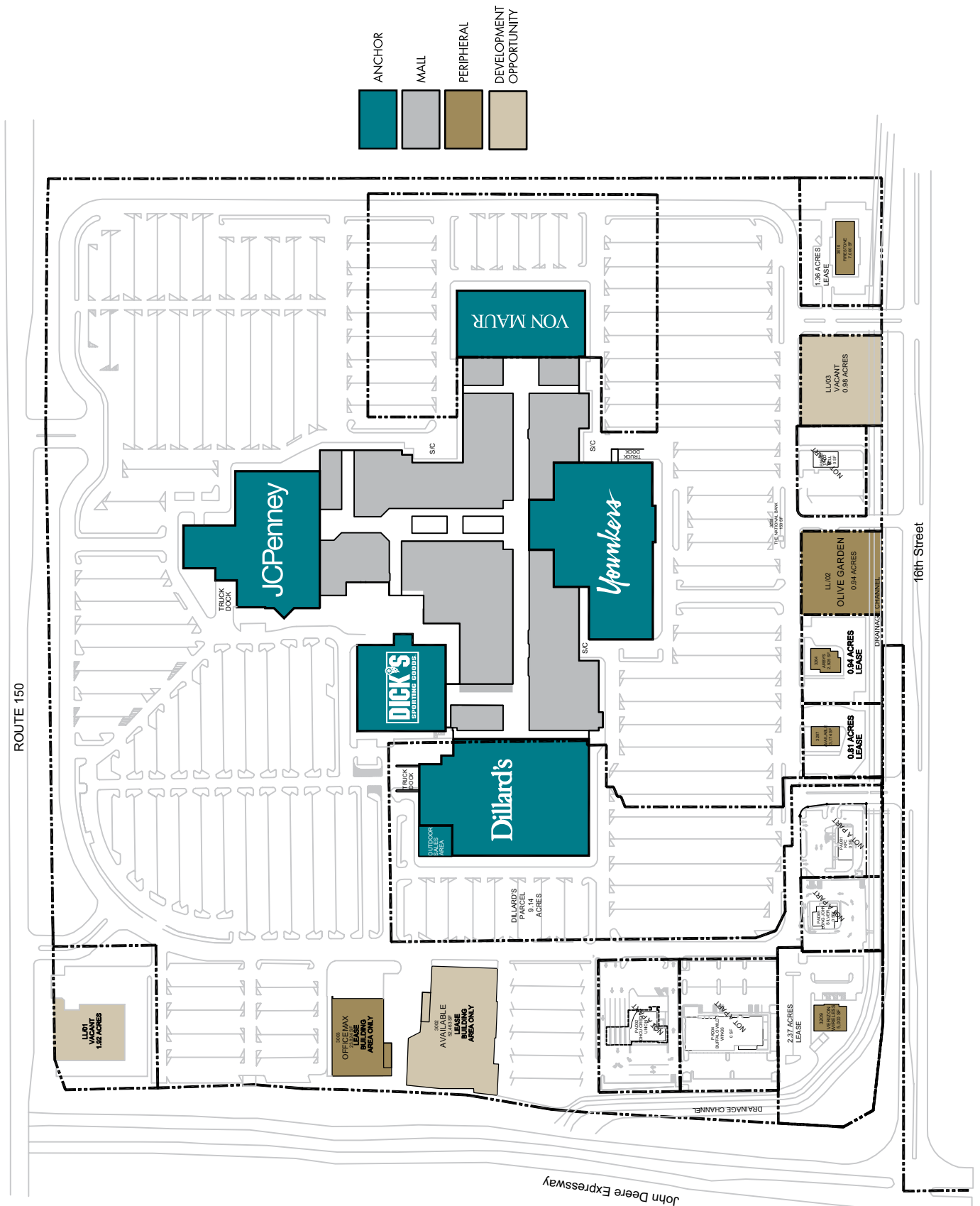
LEGEND

-  SOUTHPARK MALL
-  PRIMARY TRADE AREA
-  SECONDARY TRADE AREA
-  COMPETITIVE CENTERS
-  OTHER CENTERS



10% PCW

SITE PLAN



MARKET FACT SHEET

WITHIN 5 MILES OF SOUTHPARK OVER
14,000 COLLEGE STUDENTS
BETWEEN BLACK HAWK COLLEGE AND
WESTERN ILLINOIS UNIVERSITY-QUAD CITIES

NEARBY IWIRELESS CENTER, WITH
SEATING UP TO 12,000,
HOSTS EVERYTHING FROM
CONCERTS TO SPORTING EVENTS
AND IS THE PREMIER VENUE FOR
ENTERTAINMENT IN THE REGION

QUAD CITIES
INTERNATIONAL AIRPORT
SERVES MORE THAN
730,000 PASSENGERS

QUAD CITIES RIVER BANDITS,
A CLASS A MINOR LEAGUE BASEBALL
TEAM, IN 2016 HAD NEARLY
235,000 ATTENDEES

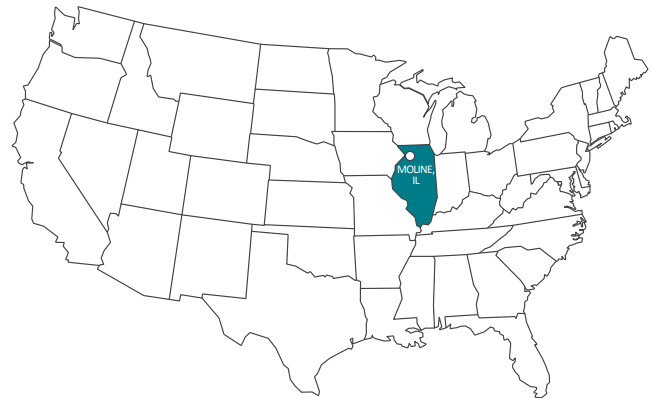
SOUTHPARK MALL IS
LOCATED OFF OF I-74 AND
JOHN DEERE EXPRESSWAY
WHICH HAVE AVERAGE
DAILY TRAFFIC OF
42,000 VEHICLES

MOLINE IS THE CORPORATE
HEADQUARTERS OF
FORTUNE 500 COMPANY,
JOHN DEERE & COMPANY WITH
7,600 EMPLOYEES

39% INCREASE
IN CORPORATE & REGIONAL
HEADQUARTERS EMPLOYMENT

ROCK ISLAND ARSENAL
IS THE LARGEST
GOVERNMENT-OWNED
ACTIVE WEAPONS
MANUFACTURING
ARSENAL IN THE U.S.

AMTRAK SERVICE
WILL COME TO THE CITY
IN SPRING 2017



56% INCREASE
IN ECONOMIC STRENGTH IN 10
YEARS, PEOPLE AND BUSINESSES
HERE ENJOY THRIVING QUALITY
OF LIFE AMENITIES, STRONG
SCHOOL SYSTEMS AND AN
AFFORDABLE COST OF LIVING

ELECTRIC RATES IN THE NATION'S LOWEST 20% WITH NEARLY 40%
COMING FROM **RENEWABLE SOURCES**

PGA TOURNAMENT OF THE YEAR, JOHN DEERE CLASSIC, DONATES
MORE THAN \$10.54 MILLION TO CHARITY EACH YEAR AND CONTRIBUTES
\$54 MILLION ANNUALLY TO THE ECONOMY

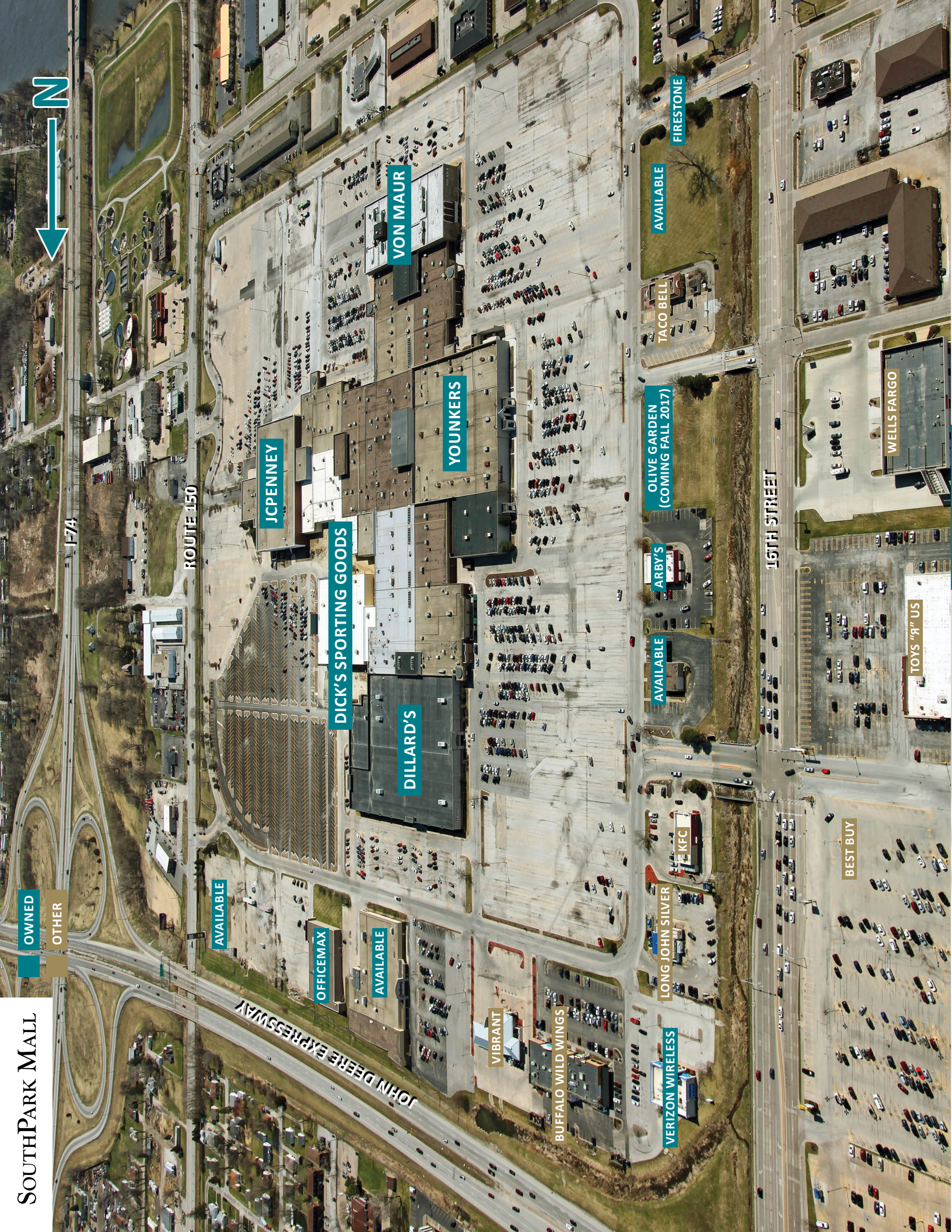
IN 2016 QUAD CITIES CHAMBER RECEIVED BEST OVERALL
BUSINESS RETENTION & EXPANSION AWARD

YEARLY SALES

JAN	6.4%	MAY	7.5%	SEP	7.9%
FEB	8.2%	JUN	8.3%	OCT	7.3%
MAR	8.4%	JUL	7.1%	NOV	9.2%
APR	7.4%	AUG	7.8%	DEC	14.5%

SOUTH PARK MALL

OWNED
OTHER



I-74

ROUTE 150

JOHN DEERE EXPRESSWAY

16TH STREET

AVAILABLE

JCPENNEY

DICK'S SPORTING GOODS

DILLARD'S

YOUNGERS

VON MAUR

OFFICEMAX

AVAILABLE

VIBRANT

BUFFALO WILD WINGS

LONG JOHN SILVER

VERIZON WIRELESS

AVAILABLE

ARBY'S

OLIVE GARDEN
(COMING FALL 2017)

AVAILABLE

TACO BELL

FIRESTONE

BEST BUY

TOYS "R" US

WELLS FARGO